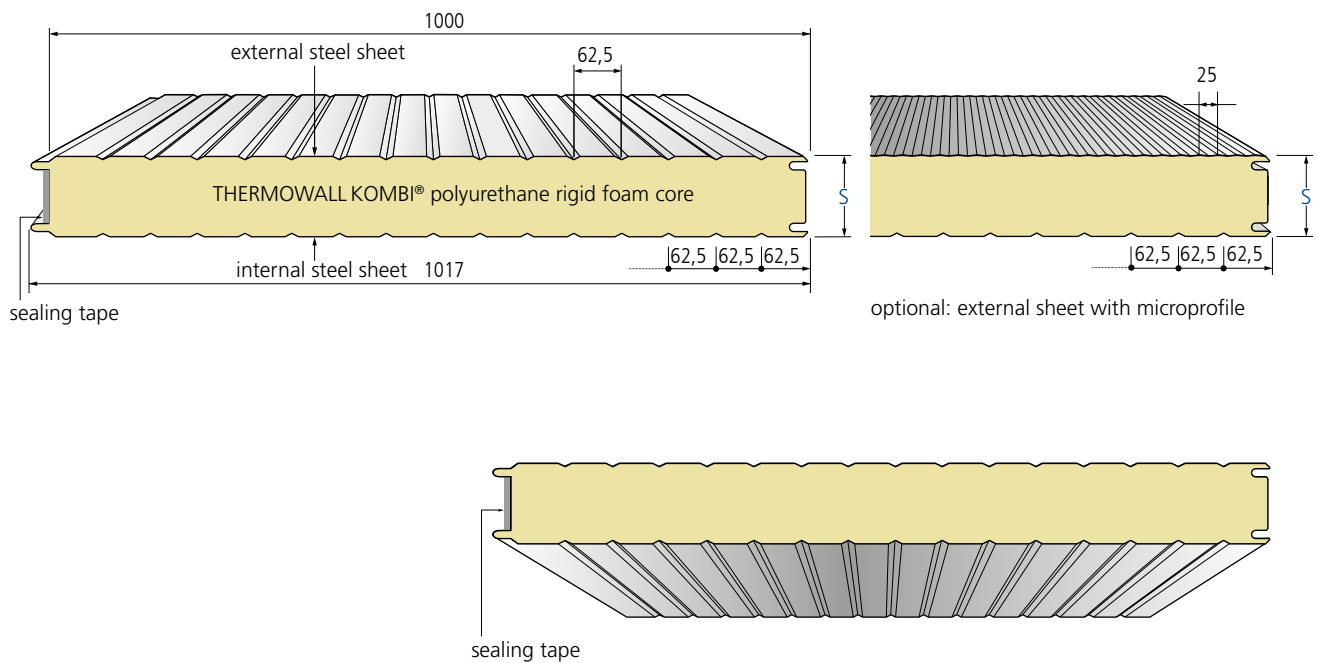


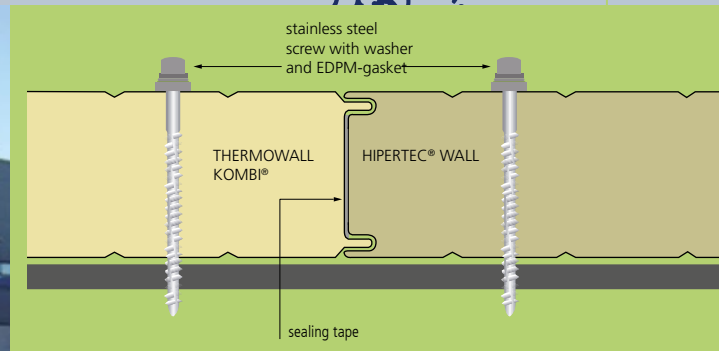


The Thermowall Kombi® panel with CFC and HCFC free polyurethane insulation core was developed as combination element matching the HIPERTEC® Wall panel with both panels having the same joint geometry. Thus, walls with high demands for thermal insulation (Thermowall Kombi®) can be combined with walls having high fire resistance requirements (Hipertec® Wall) without any visual impact. Besides, the symmetric profile geometry of external

and internal sheet makes this product an excellent partition wall. A non-displaceable longitudinal sealing strip produces a joint resistant to driving rain and wind. The organic coating of the steel sheet ensures efficient protection against all kinds of weather. Additional coating systems are available for advanced application. More information is available in the download area www.en.metecno.de.



different internal profiles on request, dimensions in mm



PRODUCTION AND LABELING

Production according to applicable European Building Product Regulation as per sandwich norm DIN EN 14509 label-marking in accordance with EC certificate of conformity 0769-C PR-VAS-00420

APPLICATION APPROVAL

Current approvals, certificates and general building permits at www.en.metecno.de/service.

REACTION TO FIRE

Building material classified as B-s2,d0 low flammable according to DIN EN 13501-1

THERMAL CONDUCTIVITY

$\lambda = 0.024 \text{ W / m.K}$ according to DIN 4108 and DIN EN 13165
The insulation values are regularly monitored by external bodies and may be applied without any further reduction

SOUND INSULATION

$R_w \geq 25 \text{ dB}$

STANDARD COATING

External steel sheet: 25 μm polyester

Internal steel sheet: $\approx 15 \mu\text{m}$ thin coating (DU).

For standard colours and different coating systems please refer to our colour chart

STANDARD LENGTHS

> 2.00 m to 25.00 m, greater lengths on request

CORROSION PROTECTION

According to DIN EN 10169:

External sheet: Class RC3

Internal sheet: Class RC2

According to DIN EN ISO 12944-2:

External sheet: corrosivity category C3 corresponding to average duration of protection for urban and industrial environments with moderate exposure to sulphur dioxide

Internal sheet: corrosivity category C2 for dry indoor rooms and buildings with occasional probability of minor condensation

Other coating systems are available for more sophisticated demands such as for buildings near the sea, farm buildings with high ammonia exposure or moist rooms

STANDARD STEEL SHEETS

Hot-dip galvanized steel, grade S 320 GD + Z 275 according to DIN EN 10346

TABLE OF SPANS

Please visit our website www.en.metecno.de

PACKAGING

External sheet provided with removable protective film, panel packages wrapped with banded plastic foil to protect from soiling

INTERLOCKING JOINT COMPATIBILITY WITH HIPERTEC® WALL & METFIBER® ECO WALL

type of element	core thckn. s	external steel sheet tn	internal steel sheet tn	weight	thermal resistance R	thermal conductivity (Ψ – joint effect)	
						U w/o Ψ	U with Ψ
	mm	mm	mm	kg / m ²	m ² K / W	W / m ² K	W / m ² K
THERMOWALL KOMBI®	60	0,60	0,45	11,5	2,46	0,398	0,413
	80	0,60	0,45	12,3	3,29	0,299	0,307
	100	0,60	0,45	13,1	4,12	0,239	0,244
	120	0,60	0,45	13,9	4,96	0,200	0,203
	150	0,60	0,45	15,1	6,21	0,160	0,162
	200*	0,60	0,45	17,1	8,29	0,120	0,121

*approval pending

